

Christchurch club adopts the 'Ranger'



The Christchurch Model Yacht Club in New Zealand's South Island - the oldest model yacht club in the country, has adopted a new class RC yacht - the 48" "Ranger", being seen as ideal for the Summer weed and lighter wind conditions on it's home lake.

The boat - a long keeled model, has an all-up sailing weight of 6.5 Kg, and a rig that allows the yacht to fit into the back of most hatch-back cars (with the seats down) when fully rigged. It's design started from an MAP plan of a scale version of the Super J Class *Ranger* - a successful defender of the America's Cup in the '30's, and was part of a commercial project by Christchurch's Norm and Jan Sisson's model boat business.

by **Hugh Hobden**

Hugh Hobden, Dave Heanly & Peter Vincent, with *Thistle, Shamrock and Endeavour*, left to right.

With the plan adapted and enlarged for fibreglass production, the hulls were moulded in Timaru for the Sisson's, the first run of 14 made available for sale. Club member **Dave Heanly** was the first to build, seeking help from Hugh Hobden in designing a rig. Both liked the olde-worlde look of the design, and a rig that eventually had the proportions of the original J Class eventuated.

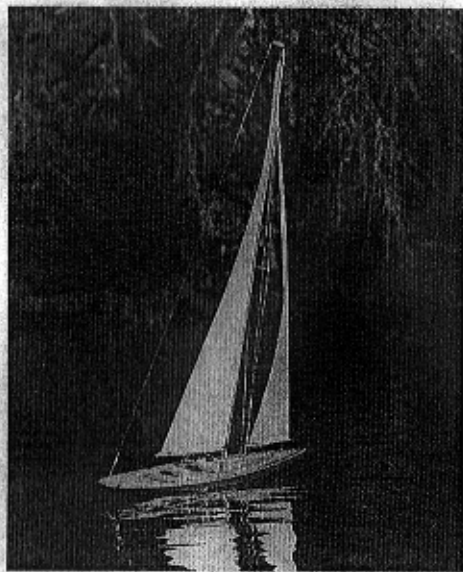
The resulting rig seems to cover a wide wind range, and one of the original hulls bought by **Euan Sarginson** was seen by and sold to Windling World's Publisher, and now exists as the detailed scale ketch, *Marigold* in Auckland.

(Continued on page 7)

NO 8 IS IN AUCKLAND
DAVE MOONEY OWNER

The remaining hulls having languished in the Sisson's shop were then bought in bulk by members of the CMYC, in order to overcome the frustration of deep-keel 1M and RM skippers unable to sail due to weeded-up water. A new and exciting, one design class was born.

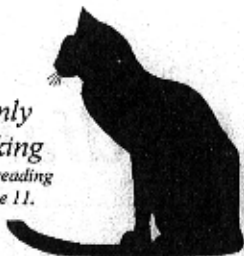
Hugh Hobden's *Thistle* and Peter Vincent's *Endeavour* have joined Heanly's *Shamrock* to comprise the first trio, and John Laycock, Irwin Gibbs, Laurie Wales, John Jones & Norman Hill have boats, bringing the total to eight.



A set of rules similar to the 1M class has been drawn up, Peter Vincent has made a mould for leads and looks after casting, Laurie Wales has produced fine sets of sails for the class, and masts, booms and fittings are being manufactured by Irwin Gibbs - altogether a fine club member effort. At the time of going to print, the Association has decided that the class now be known as the J Class instead of Ranger Class.



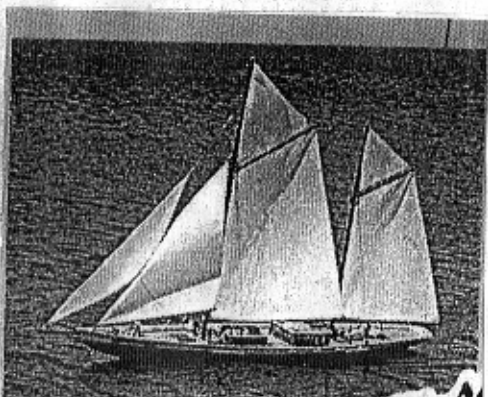
Only
Asking
after reading
page 11.



**"IS A CAT,
WELL UP IN THE EYES
OF A BOAT, CLASSIFIED AS
A BOATCAT?"**

On the Cover:

Ebbtide loading cargo. A beautiful photograph by Dave Heanly taken at Queen Elizabeth Park Christchurch N.Z., of a Thames barge he owned at the time. INSET. The J hulled ketch *Marigold* on a summer sail in Auckland.



longing days of our early youth'.